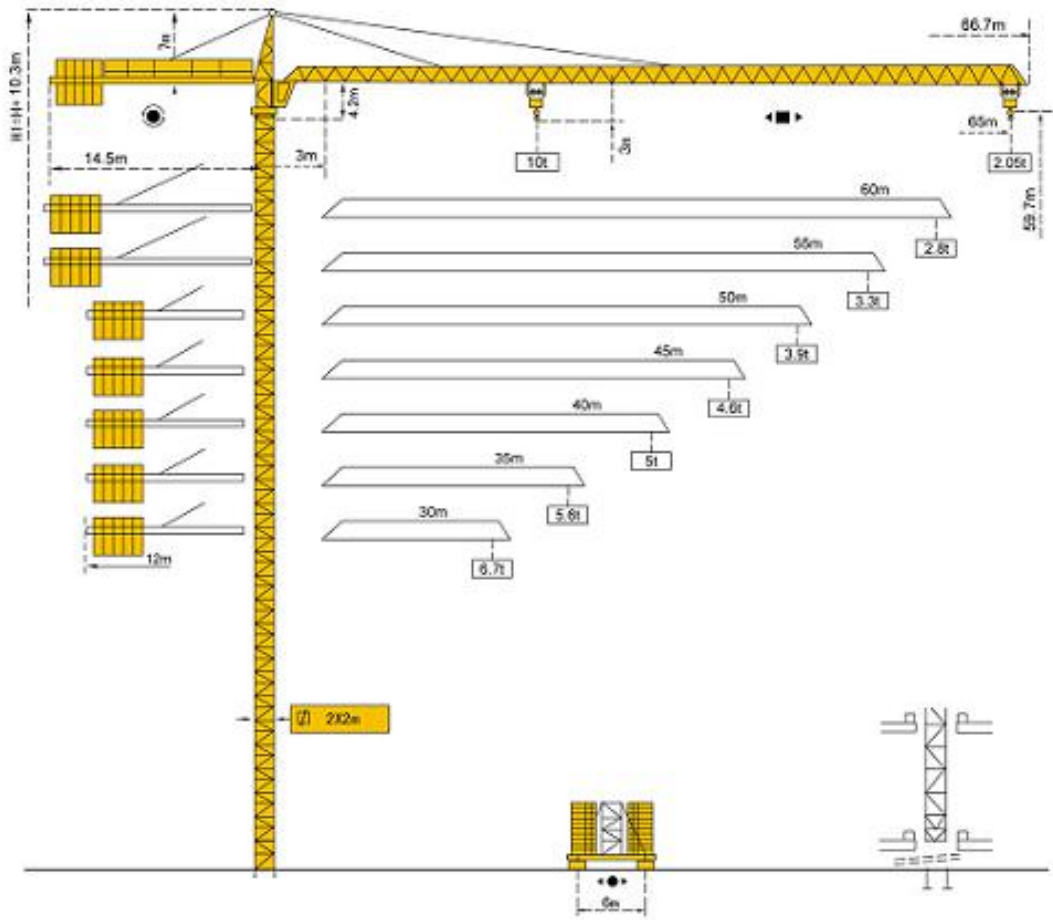




张家港浮山塔机使用说明书 – 技术参数
ZHANGJIAGANG FUSAN TOWER CRANE OPERATING
INSTRUCTION – TECHNICAL PARAMETER



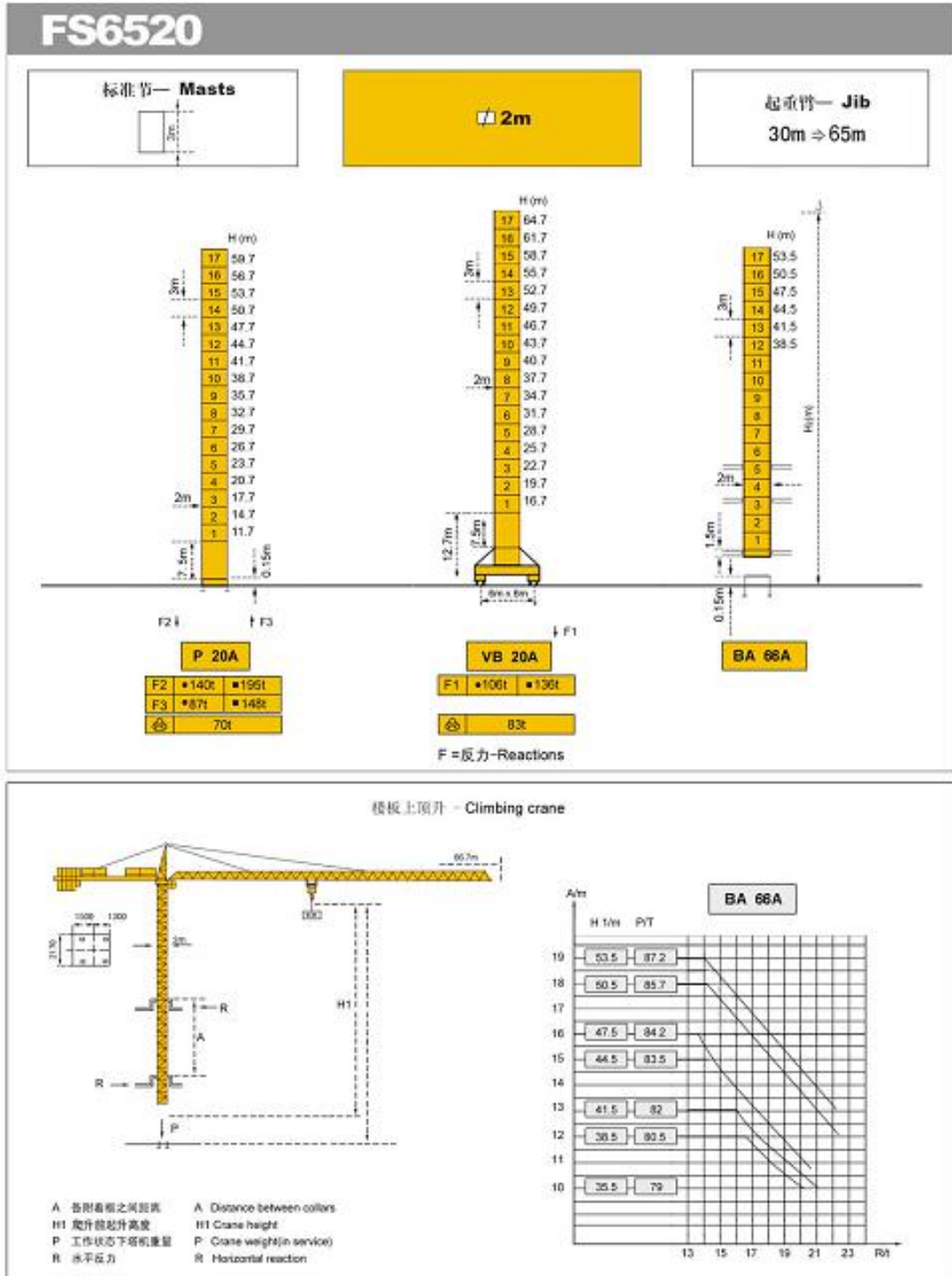
塔式起重机 FS6520
Tower crane



FUSAN



张家港浮山塔机使用说明书 – 技术参数
 ZHANGJIAGANG FUSAN TOWER CRANE OPERATING
 INSTRUCTION – TECHNICAL PARAMETER

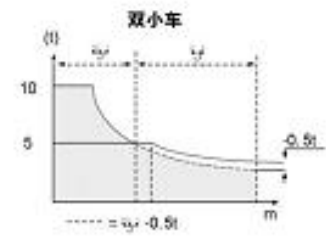
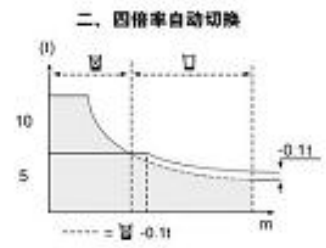




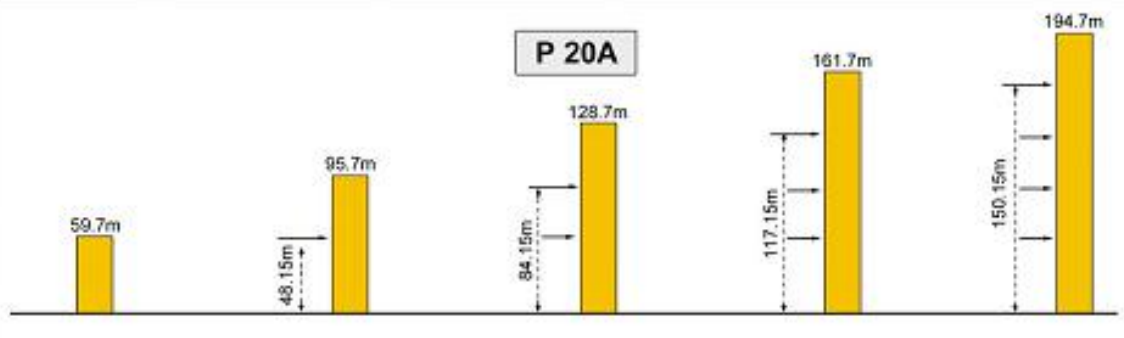
张家港浮山塔机使用说明书 – 技术参数
 ZHANGJIAGANG FUSAN TOWER CRANE OPERATING
 INSTRUCTION – TECHNICAL PARAMETER

负荷曲线 - Courbes de charges - Load diagrams

吊钩 / 吊钩	16	17	20	22	25	27	28.5	31.1	32	35	37	40	42	45	47	50	52	55	57	60	62	65	
55m	10	9.3	7.7	6.9	5.9	5.3	5	5	4.6	4.4	4.1	3.7	3.5	3.2	3.1	2.9	2.7	2.5	2.4	2.3	2.2	2.1	2.0
60m	10	9.3	8.3	7.1	6.5	5.7	5.3	5	5	4.9	4.5	4.3	3.9	3.7	3.5	3.3	3.1	3	2.8				
55m	10	9.8	8.8	7.6	6.9	6.1	5.6	5.0	5	5	4.8	4.5	4.2	4	3.7	3.5	3.3						
50m	10	9.3	8	7.3	6.4	5.8	5.3	5	5	4.8	4.4	4.2	3.9										
45m	10	9.7	8.3	7.6	6.7	6.2	5.6	5.2	5	5	4.8												
40m	10	9.7	8.3	7.6	6.7	6.2	5.6	5.2	5	5													
35m	10	9.7	8.3	7.6	6.7	6.2	5.6																
30m	10	9.7	8.3	7.6	6.7																		



附着 – Ancrages – Anchorages



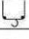
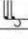


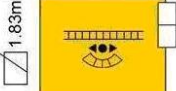


- 工作状态 (In service)
- 非工作状态 (Out of service)
- ⊗ 空载, 无配重 (Without load and ballast with longest jib and maximum height)
- ⊙ 起重量和高度均为最大 (Maximum lifting capacity and maximum height)



机构特性 Structural Characteristics **FS6520**

机构-Mechanisms

			m/min	t	m/min	t		hp	kw
起升 Hoisting									
		JPK160	5 42 84	5 5 2.5	2.5 21 42	10 10 5	≤ 580		45
变幅 Trolleying		95JX2			0 ↓ 58				7.5
回转 Slewing		JL207			0 ↓ 0.8 r/min				2×5.5
行走 Travelling					20				4X3.7

电网 - Mains supply	CEI 38 IEC 38	400V(+6%-10%)50HZ
所需功率 - Necessary electric power		76.3Kw
发电机组 - Generator set		

FUSAN 张家港浮山建设机械有限公司
ZHANGJIAGANG FUSAN CONSTRUCTION MACHINERY CO., LTD.

地 址 (ADD) : 张家港市金港镇后滕文星路
销售热线 (TEL) : 0512-58773719
传 真 (FAX) : 0512-58773712
HTTP : // WWW.FSJJ.COM
E-MAIL : FSJJ@FSJJ.COM

禁止复制和翻印 Copyright, Reproduction interdite **FUSAN2008**

Tower crane
塔式起重机 **FS6520**