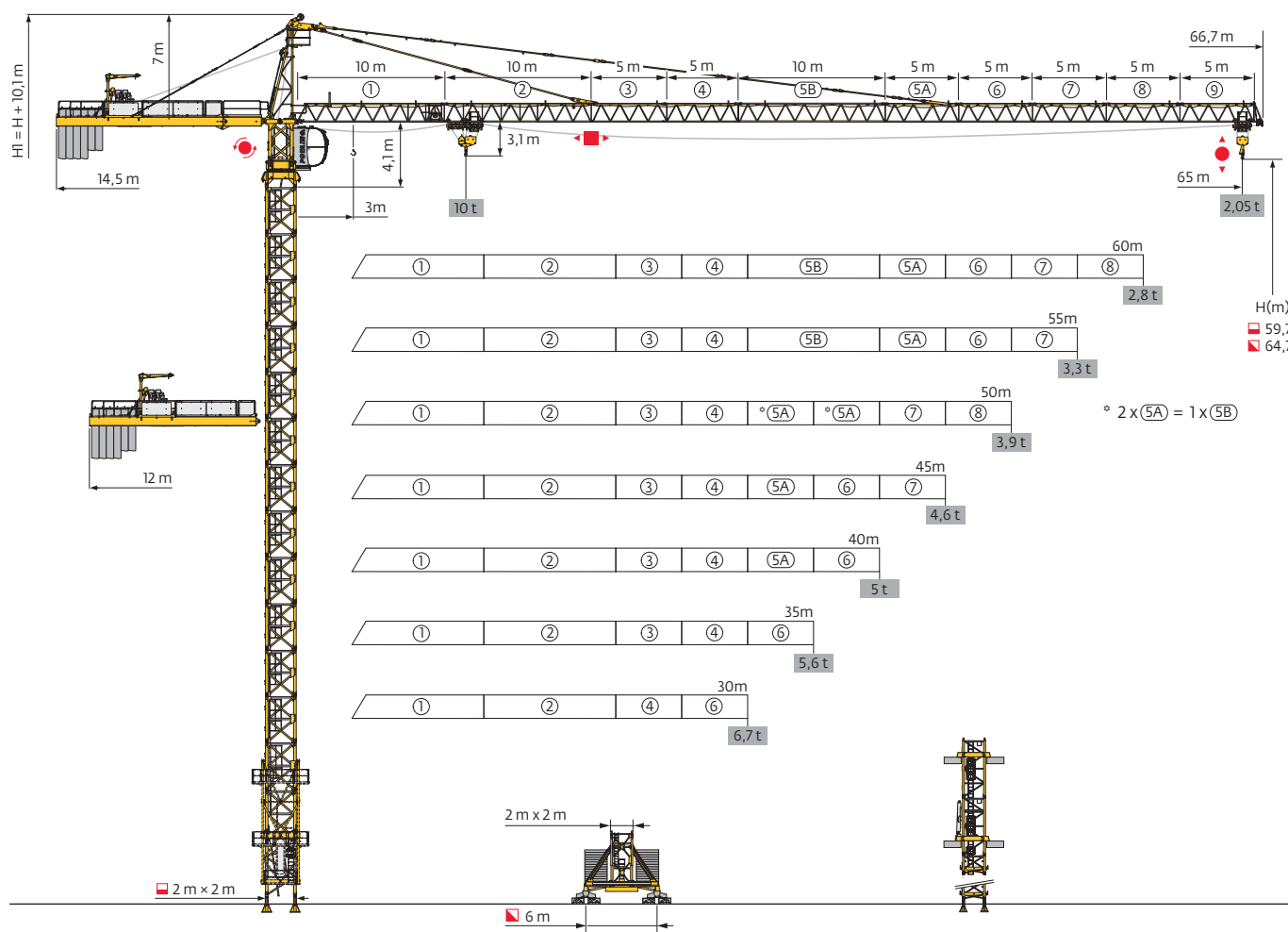


MC 系列

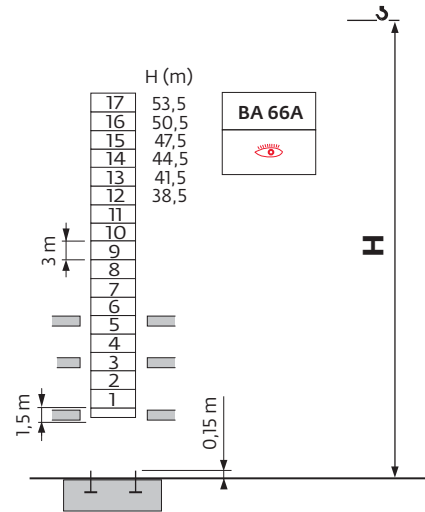
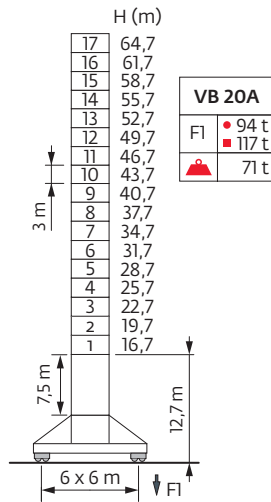
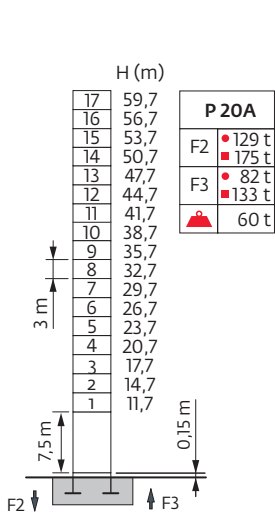
Potain MC 230A



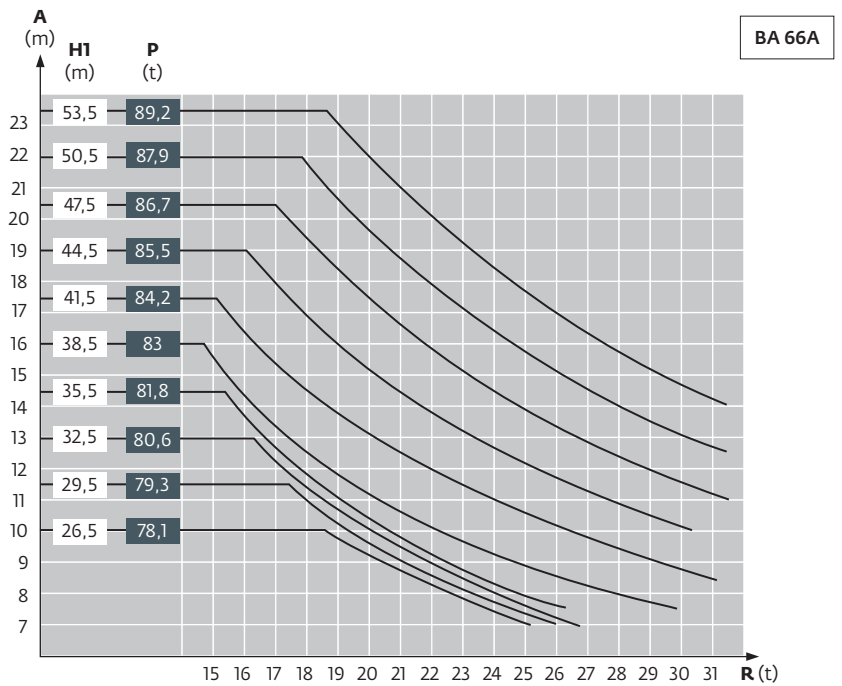
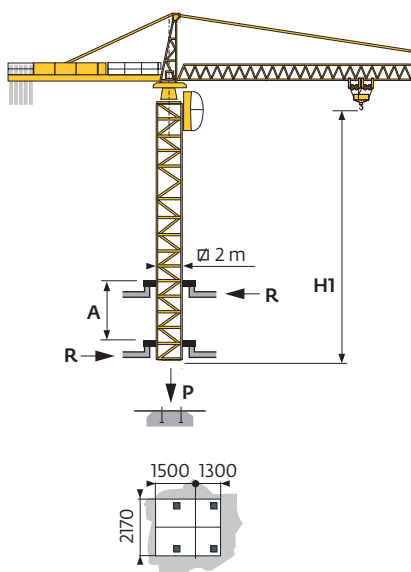
标准节 - 反力

□ 2 m

▲▲▲ 30 m → 65 m

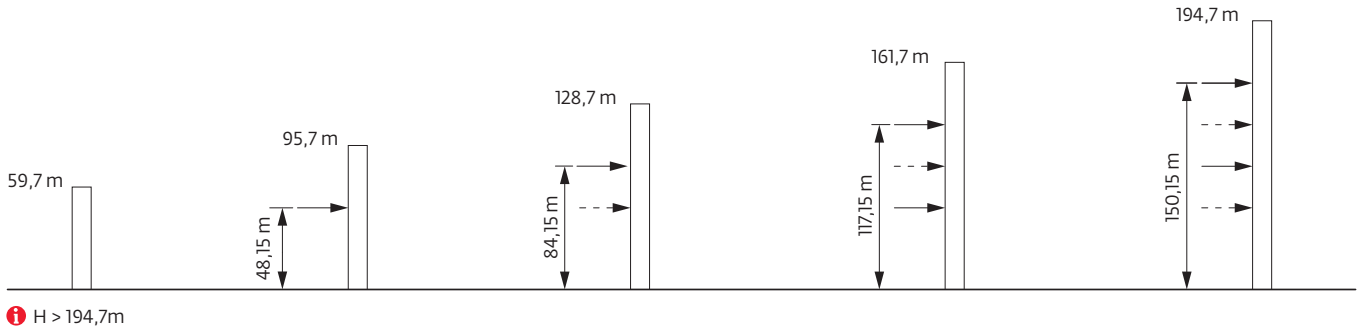


内爬塔机



附着

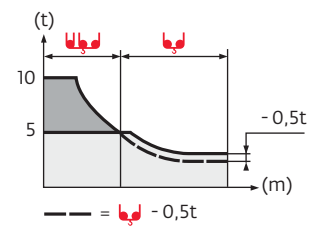
P 20 A






负荷曲线





65 m	3	▶	16	17	20	22	25	27	28,5	31,1	32	35	37	40	42	45	47	50	52	55	57	60	62	65	m
▲▼▲▼			10	9,3	7,7	6,9	5,9	5,3	5	→5	4,8	4,4	4,1	3,7	3,5	3,2	3,1	2,9	2,7	2,5	2,4	2,3	2,2	2,05	t
60 m	3	▶	18,8	20	22	25	27	30	32	33,6	36,6	37	40	42	45	47	50	52	55	57	60				m
▲▼▲▼			10	9,3	8,3	7,1	6,5	5,7	5,3	5	→5	4,9	4,5	4,3	3,9	3,7	3,5	3,3	3,1	3	2,8				t
55 m	3	▶	19,7	20	22	25	27	30	32	35	35,3	38,4	40	42	45	47	50	52	55						m
▲▼▲▼			10	9,8	8,8	7,6	6,9	6,1	5,6	5,05	5	→5	4,8	4,5	4,2	4	3,7	3,5	3,3						t
50 m	3	▶	20,6	22	25	27	30	32	35	37	40,2	42	45	47	50										m
▲▼▲▼			10	9,3	8	7,3	6,4	6	5,3	5	→5	4,8	4,4	4,2	3,9										t
45 m	3	▶	21,4	22	25	27	30	32	35	37	38,4	41,8	45												m
▲▼▲▼			10	9,7	8,3	7,6	6,7	6,2	5,6	5,2	5	→5	4,6												t
40 m	3	▶	21,4	22	25	27	30	32	35	37	38,4	40													m
▲▼▲▼			10	9,7	8,3	7,6	6,7	6,2	5,6	5,2	5	→5													t
35 m	3	▶	21,4	22	25	27	30	32	35																m
▲▼▲▼			10	9,7	8,3	7,6	6,7	6,2	5,6																t
30 m	3	▶	21,4	22	25	27	30																		m
▲▼▲▼			10	9,7	8,3	7,6	6,7																		t



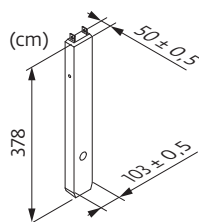
压重

 2 m	VB 20 A	H (m)	64,7	61,7	58,7	55,7	52,7	49,7	46,7	43,7	40,7	37,7	34,7	31,7	28,7	25,7	22,7	19,7	16,7	13,7
		 (t)	108	84	72	60	48	36	36	36	36	36	36	36	36	36	36	36	36	36

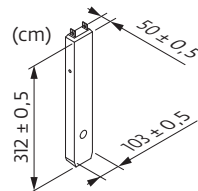
平衡臂配重

	4200 kg	3400 kg	2300 kg	 (kg)
65 m	4	2	0	23 600
60 m	3	2	1	21 700
55 m	4	1	0	20 200
50 m	4	2	0	23 600
45 m	3	2	1	21 700
40 m	3	2	0	19 400
35 m	4	0	0	16 800
30 m	2	1	1	14 100

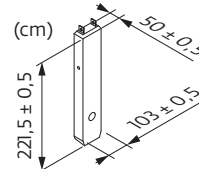
CA - 4200 kg



CR - 3400 kg



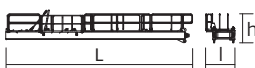

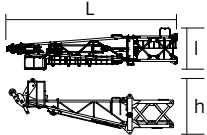
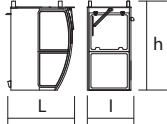
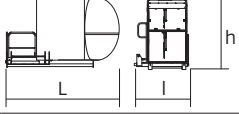
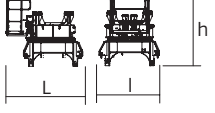
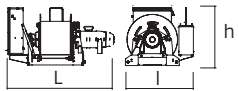

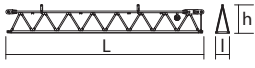
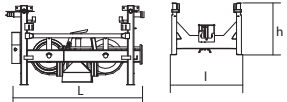
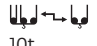
CS - 2300 kg

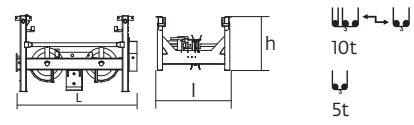
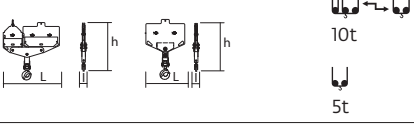
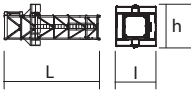
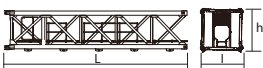
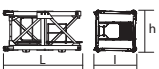
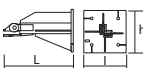
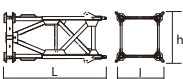
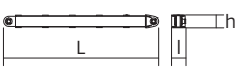
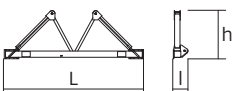


尺寸和重量








塔机回转部分 :  65 m -  -  -  75 LVF



塔机回转部分		L (m)	l (m)	h (m)	kg (+/- 5%)	
平衡臂		11,31	2,01	2,23	4120	
		2,89	1,58	1,7	800	
塔帽		9,54	1,77	2,88	4410	
驾驶室	 Smartview 胜景舱	1,68	1,18	2,31	385	
驾驶室	 V140S 太空舱	3,4	1,9	2,57	1130	
回转机构	 \square 2 m	2,92	2,5	2,73	5120	
起升机构		55 RCS	2,3	1,71	2610	
		60 LVF	2,31	1,99	2155	
		75 LVF	2,48	1,62	2520	
起重臂根部节	 ① 6 D3 V4	10,22	1,93	1,18	1705	
起重臂节		②	10,25	1,38	1,17	1345
		⑤B	10,23	1,38	1,17	930
起重臂节		③	5,23	1,38	1,15	645
		④	5,23	1,38	1,14	645
		⑤A	5,23	1,38	1,14	495
		⑥	5,2	1,38	1,14	530
		⑦	5,17	1,38	1,13	395
		⑧	5,15	1,38	1,1	325
		⑨	5,15	1,38	1,1	285
后小车	  10t	1,64	1,64	0,97	270	

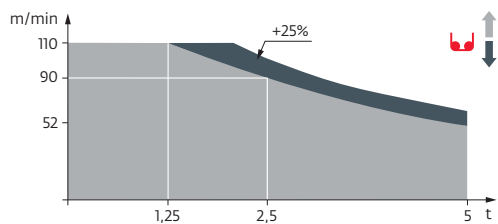
塔机回转部分		L (m)	l (m)	h (m)	kg (+/- 5%)	
前小车		1,83	1,64	0,97	290	
吊钩		1,38 0,92	0,26 0,22	1,4 1,41	350 195	
顶升装置						
顶升套架		7,3	3,98	3,78	4605	
标准节						
S 68 J		7,74	2,1	2,1	4170	
L 66 A3 L 68 B3		3,26 3,26	2,12 2,12	2,12 2,12	1410 1530	
塔机底座						
固定支脚		P 20A - Ø65 R 20A - Ø65	1,4 0,81	0,6 0,6	300 225	
基节		VB 20 A	5,07	2,39	2,39	4360
斜撑		VB 20 A	4,51	0,26	0,27	390
底架		VB 20 A	6,7	0,7	2,31	1600

















机构


400 V - 50 Hz											hp	kW		
	55 RCS 25	m/min t	0 → 44 5		0 → 88 2,5		0 → 22 10		0 → 44 5		55	40	500 m	
	75 LVF 25 Optima	m/min t	53 → 68 5	→ 95 3,75	→ 117 2,5	→ 125 1,25	26,5 → 34 10	→ 47,5 7,5	→ 58,5 5	→ 62,5 2,5	75	55		895 m
	6 D3 V4	m/min	10 - 50 (10 t) - 100 (5 t)									6	4,4	
	RCV185	rpm	0 → 0,8									2 x 9	2 x 6,6	
	VB20A RT 544 A1 2V R ≧ 13 m	m/min	13,5 → 27									4 x 7	4 x 5,2	

CEI 38  IEC 38	kVA
400 V (+10% -10%) 50 Hz	55 RCS : 62 kVA 75 LVF : 78 kVA

75 LVF 25 Optima



-  上绕度
-  工作状态下的反力
-  非工作状态下的反力
-  起重机在无载荷、无配重、独立高度状态下的压重
-  总配重
-  13, 4m 卡车
-  40⁺ 立方集装箱
-  坚固的附着框
-  松开的附着框
-  起升
-  变幅
-  回转
-  行走
-  额定功率
-  参阅内爬
-  联系我们

 此商业文件不承担法律责任，对于任何技术信息，请查阅相应说明书。



马尼托瓦克起重设备（中国）有限公司
 工厂地址：江苏省张家港市经济开发区（南）区金塘路55号
 市场总部：上海市中山南二路1089号徐汇苑大厦16层
 总机：021-6457 0066
 传真：021-6457 4985
 邮编：200030

Ref. MC 230A - 201313 - 0 CN