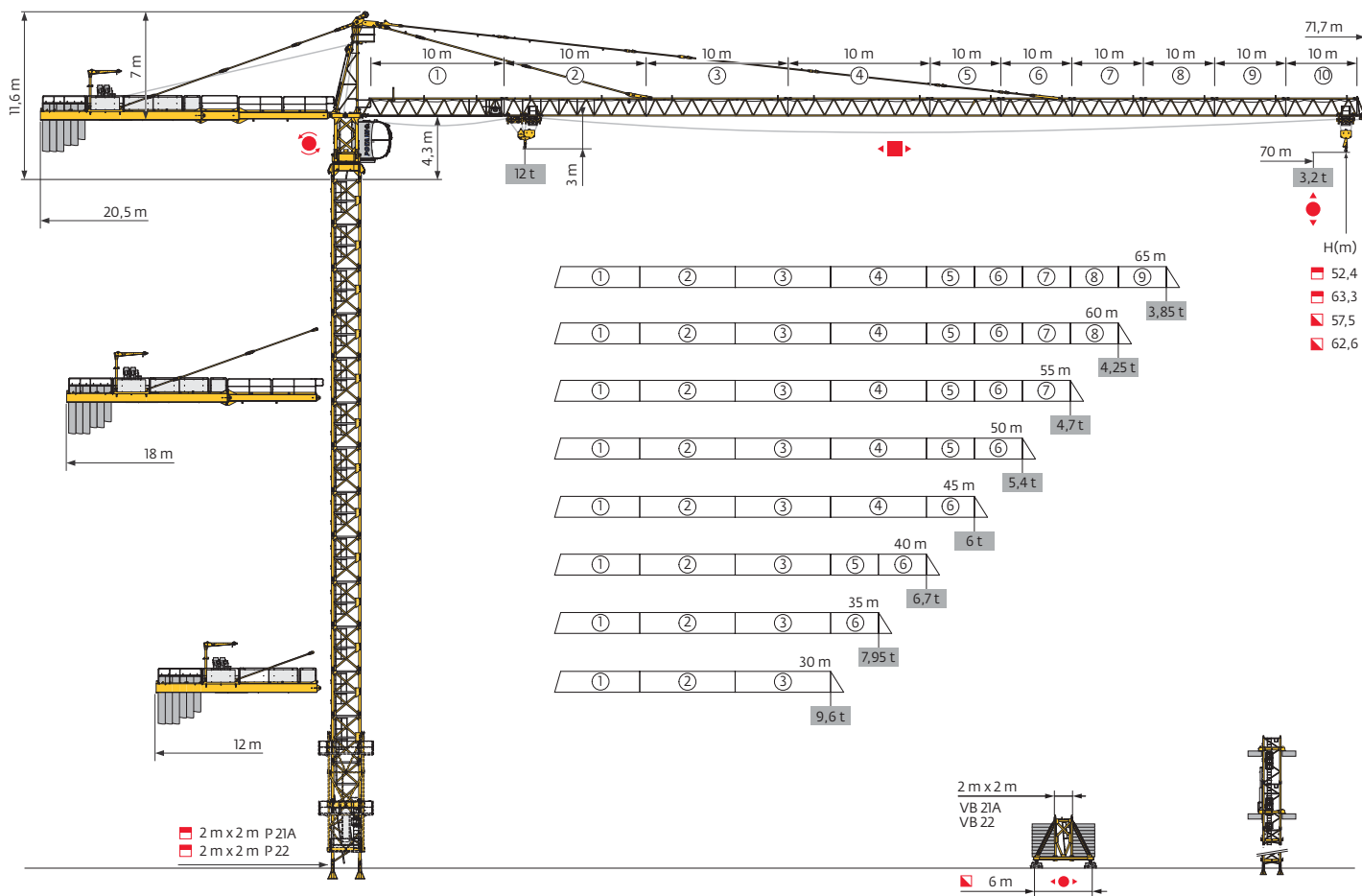


MC 系列

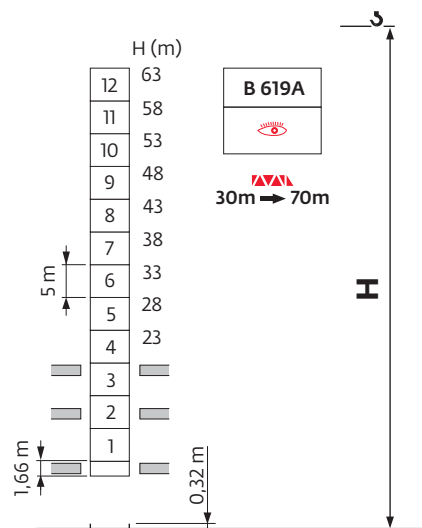
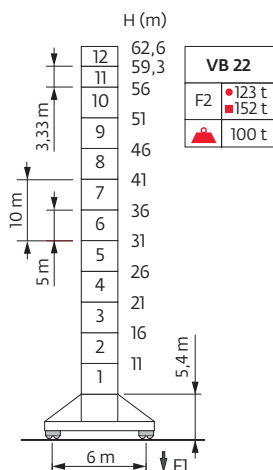
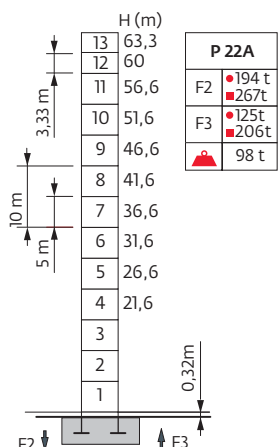
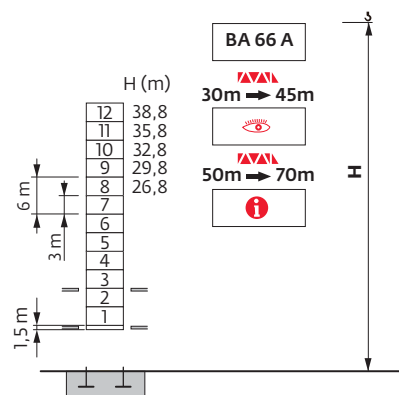
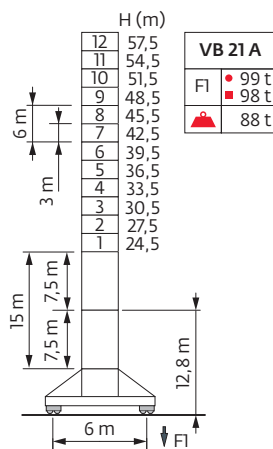
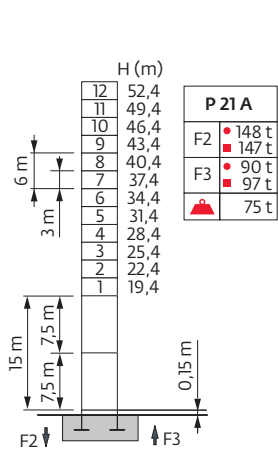
Potain MC 320A K12



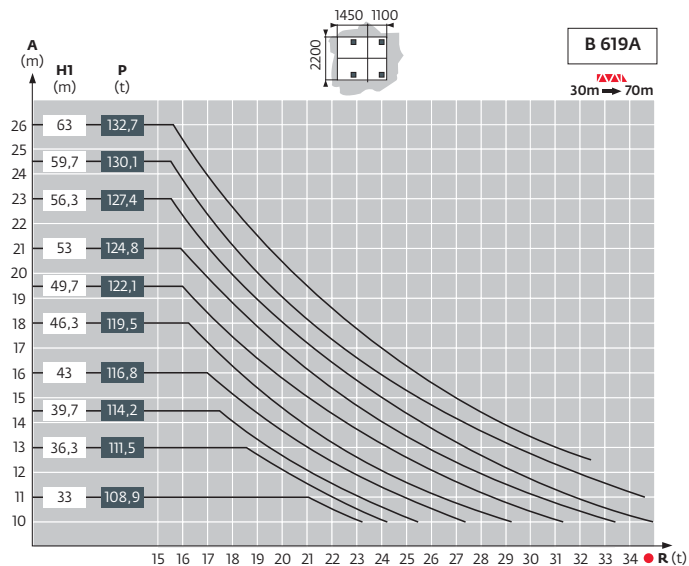
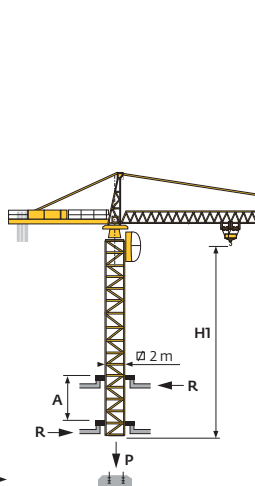
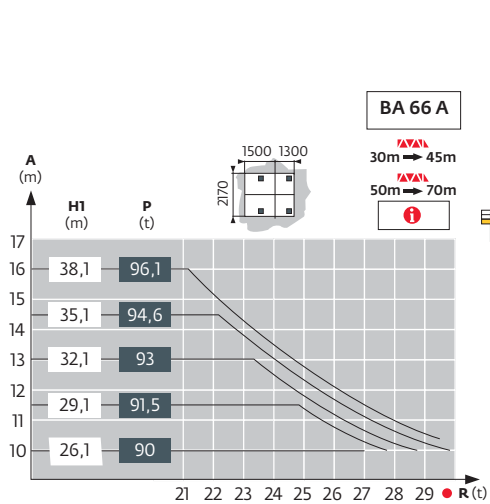
塔身组成 - 反力

□ 2 m

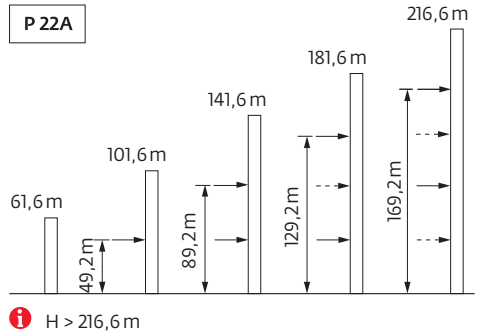
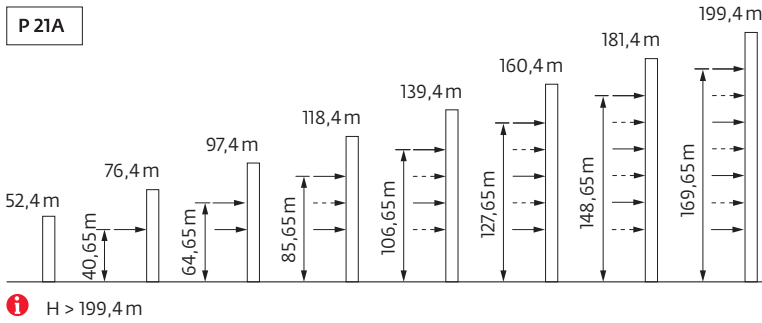
▲ 30 m → 70 m



内爬塔机



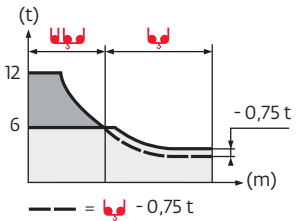
附着



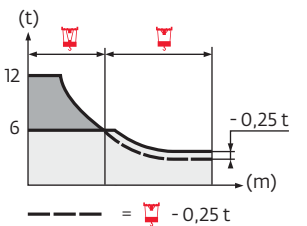
负荷曲线



70 m	3,1	▶		21,4	22	25	27	30	32	35	37	37,4	41,9	45	47	50	52	55	57	60	62	65	67	70	m
▲▼▲▼				12	11,6	10	9,1	8	7,3	6,5	6,1	6	6	5,5	5,2	4,9	4,6	4,3	4,2	3,9	3,7	3,5	3,4	3,2	t
65 m	3,1	▶		22,8	25	27	30	32	35	37	39	40,4	44,7	47	50	52	55	57	60	62	65				m
▲▼▲▼				12	10,8	9,8	8,7	8	7,2	6,7	6,3	6	6	5,7	5,3	5	4,7	4,5	4,2	4,1	3,85				t
60 m	3,1	▶		22,8	25	27	30	32	35	37	39	40,4	44,7	47	50	52	55	57	60						m
▲▼▲▼				12	10,8	9,8	8,7	8	7,2	6,7	6,3	6	6	5,7	5,3	5	4,7	4,5	4,25						t
55 m	3,1	▶		22,8	25	27	30	32	35	37	39	40,4	44,7	47	50	52	55								m
▲▼▲▼				12	10,8	9,8	8,7	8	7,2	6,7	6,3	6	6	5,7	5,3	5	4,7								t
50 m	3,1	▶		23,3	25	27	30	32	35	37	40	41,2	45,7	47	50										m
▲▼▲▼				12	11,1	10,1	8,9	8,2	7,4	6,9	6,2	6	6	5,8	5,4										t
45 m	3,1	▶		23,8	25	27	30	32	35	37	40	42	45												m
▲▼▲▼				12	11,3	10,3	9,1	8,4	7,6	7,1	6,4	6	6												t
40 m	3,1	▶		24,7	25	27	30	32	35	37	40														m
▲▼▲▼				12	11,8	10,8	9,5	8,8	7,9	7,4	6,7														t
35 m	3,1	▶		24,8	25	27	30	32	35																m
▲▼▲▼				12	11,9	10,8	9,6	8,9	7,95																t
30 m	3,1	▶		24,9	25	27	30																		m
▲▼▲▼				12	11,9	10,9	9,6																		t



70 m	2,1	▶		21,7	22	25	27	30	32	35	38	39	42	45	47	50	52	55	57	60	62	65	67	70	m
▲▼▲▼				12	11,8	10,1	9,2	8,1	7,5	6,7	6	6	5,5	5	4,7	4,3	4,1	3,8	3,6	3,3	3,2	3	2,8	2,65	t
65 m	2,1	▶		22,9	25	27	30	32	35	37	40,5	41,5	45	47	50	52	55	57	60	62	65				m
▲▼▲▼				12	10,8	9,9	8,7	8,1	7,2	6,7	6	6	5,4	5,1	4,7	4,5	4,2	4	3,7	3,5	3,3				t
60 m	2,1	▶		23,1	25	27	30	32	35	37	41,1	42,1	45	47	50	52	55	57	60						m
▲▼▲▼				12	10,9	10	8,8	8,2	7,3	6,8	6	6	5,5	5,2	4,8	4,6	4,3	4,1	3,8						t
55 m	2,1	▶		23,1	25	27	30	32	35	37	41,1	42,1	45	47	50	52	55								m
▲▼▲▼				12	10,9	10	8,8	8,2	7,3	6,8	6	6	5,5	5,2	4,8	4,6	4,3								t
50 m	2,1	▶		23,5	25	27	30	32	35	37	40	41,9	42,9	45	47	50									m
▲▼▲▼				12	11,2	10,2	9	8,4	7,5	7	6,4	6	6	5,7	5,4	4,95									t
45 m	2,1	▶		24	25	27	30	32	35	37	40	42,7	43,8	45											m
▲▼▲▼				12	11,4	10,5	9,2	8,6	7,7	7,2	6,5	6	6	5,8											t
40 m	2,1	▶		24,8	25	27	30	32	35	37	40														m
▲▼▲▼				12	11,9	10,9	9,6	8,9	8	7,5	6,8														t
35 m	2,1	▶			25	27	30	32	35																m
▲▼▲▼					12	10,9	9,7	9	8,05																t
30 m	2,1	▶			25	27	30																		m
▲▼▲▼					12	11	9,7																		t



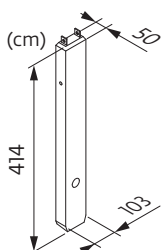
压重

2 m	VB 21 A	H (m)	57,5	54,5	51,5	48,5	45,5	42,5	39,5	36,5	33,5	30,5	27,5	24,5	21,5
	◀●▶	▲ (t)	84	72	72	72	72	72	72	60	60	60	60	60	60
	VB 22	H (m)	62,6	59,3	56	51	46	41	36	31	26	21	16	11	
	◀●▶	▲ (t)	132	108	96	72	72	72	72	72	72	72	72	72	

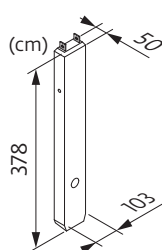
起重臂重量&平衡臂配重

75 LVF / 70 RCS	▲ (kg) (+/- 5%)			75 LVF / 70 RCS						
	▲	▲	▲	4600 kg	4200 kg	2300 kg	▲ (kg)	4200 kg	700 kg	▲ (kg)
70 m	12345	11630	12555	3	2	1	24 500	5	5	24 500
65 m	12060	11345	12270	1	4	1	23 700	5	4	23 700
60 m	11665	10950	11875	2	3	0	21 800	5	1	21 700
55 m	11115	10400	11325	4	1	1	24 900	5	5	24 500
50 m	10380	9665	10590	4	1	0	22 600	5	2	22 400
45 m	9630	8915	9840	1	3	1	19 500	4	3	18 900
40 m	8985	8270	9195	1	3	0	17 200	4	0	16 800
35 m	8235	7520	8445	0	3	1	14 900	3	2	14 000
30 m	7455	6740	7665	4	0	1	20 700	4	5	20 300

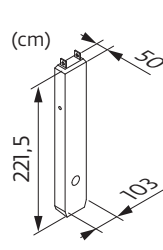
CU - 4600 kg



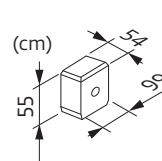
CA - 4200 kg



CS - 2300 kg






CB - 700 kg

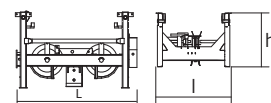
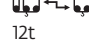

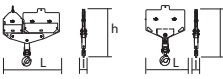
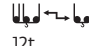

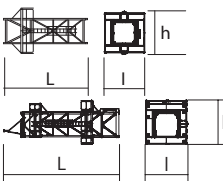


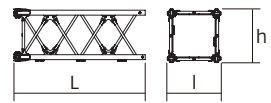
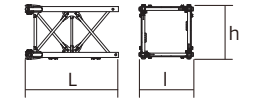
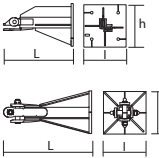

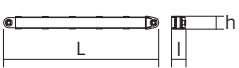
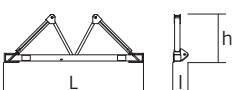


尺寸重量表








塔机回转部分 :  70 m -  -  75 LVF





塔机回转部分		L (m)	l (m)	h (m)	kg (+/- 5%)	
平衡臂		6,39	1,5	1,86	1565	
		2,7	1,52	1,93	985	
		11,1	2,09	2	4190	
塔帽		3,42	2,1	9,55	5530	
驾驶室	V140S 太空舱	3,4	1,9	2,57	1130	
回转机构	RVF162	3,12	2,5	2,75	5805	
起升机构		75 LVF 30	2,48	1,63	1,4	2055
		70 RCS 30	2,22	1,68	1,98	1795
起重臂根部节	① 6D3V4	10,17	1,9	2,09	2660	
起重臂节		②	10,17	1,38	1,45	1790
		③	10,14	1,38	1,45	1665
		④	10,27	1,38	1,18	1395
起重臂节		⑤	5,27	1,38	1,3	750
		⑥	5,14	1,38	1,18	780
		⑦	5,13	1,38	1,18	735
		⑧	5,2	1,38	1,2	550
		⑨	5,16	1,38	1,11	395
		⑩	5,2	1,38	1,2	285
小车	 12t	2,11	2,24	2,03	630	
吊钩	 12t	1,44	0,46	2,51	710	
后小车	 12t	1,72	1,72	0,99	350	

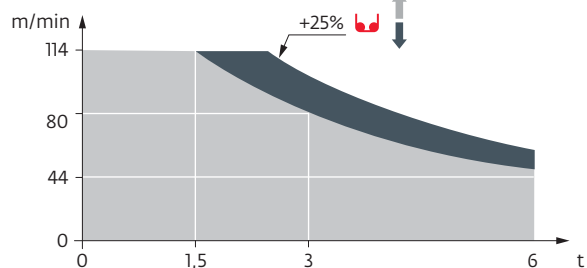
塔机回转部分		L (m)	l (m)	h (m)	kg (+/- 5%)	
前小车		 12t	3,37	1,72	0,99	700
		 6t	1,8	1,72	0,99	350
吊钩		 12t	1,65	0,25	1,77	500
		 6t	1,09	0,23	1,99	275
顶升装置						
顶升套架		P21A	7,26	3,78	3,98	5195
		P22A	11,5	4,21	4,36	8235
塔身节						
S 68 J SR 68J			7,74	2,1	2,1	4170
			7,74	2,1	2,1	5175
L 68 B3			3,26	2,12	2,12	1530
M 619 A		□ 2 m	5,32	2,13	2,13	3517
		A	-	-	-	47
		B	-	-	-	55
		C	-	-	-	122
		D	-	-	-	165
		E	-	-	-	148
M 619 C		□ 2 m	3,66	2,13	2,13	2492
		A	-	-	-	29
		B	-	-	-	41
		C	-	-	-	98
		D	-	-	-	140
		E	-	-	-	138
塔机底座						
固定支脚		P 21 A	1,31	0,8	0,8	500
		R 21 A	0,8	0,6	0,6	200
		P 22 A	1,35	0,65	0,65	390
		R 22 A	0,82	0,65	0,65	325
行走基节		VB 21 A	5,01	2,41	2,41	4390
		VB 22	5,01	2,41	2,41	4720
斜撑		VB 21 A	4,51	0,29	0,29	420
		VB 22	4,51	0,29	0,29	420
底架		VB 21 A	6,7	0,7	2,31	1600
		VB 22	6,7	0,7	2,31	1600

















机构

380 V - 50 Hz											hp	kW		
	70 RCS 30	m/min t	0 → 40 6		0 → 80 3		0 → 20 12		0 → 40 6		70	51	523 m	
	75 LVF 30 Optima	m/min t	44 6	56 4,5	80 3	116 1,5	22 12	28 9	40 6	58 3	75	55	570 m	
	6 D3 V4	m/min	15 → 50 (12 t) → 100 (6 t)									7,4	5,4	
	RVF 162 Optima+	tr/min U/min rpm	0 → 0,7									2 x 7,5	2 x 5,5	
	RT 544 A1 - 2V R ≥ 13 m	m/min	13,5 → 27									4 x 7	4 x 5,2	

CEI 38  IEC 38	
380 V (+10% -10%) 50 Hz	70 RCS : 74 kVA 75 LVF : 78 kVA

75 LVF 30 Optima



-  上绕度
-  工作状态下的反力
-  非工作状态下的反力
-  起重机在无载荷、无配重、独立高度状态下的压重
-  总配重
-  13, 4m卡车
-  40^³立方集装箱
-  坚固的附着框
-  松开的附着框
-  起升
-  变幅
-  回转
-  行走
-  额定功率
-  参阅内爬
-  联系我们



此商业文件不承担法律责任，对于任何技术信息，请查阅相应说明书。



马尼托瓦克起重设备（中国）有限公司

工厂地址：江苏省张家港市经济开发区（南）区金塘路55号
 市场总部：上海市漕溪北路333号中金国际广场B座1103-1105室
 总机：021-6457 0066
 传真：021-6457 4985
 邮编：200030

Ref. MC 320A K12 - 2014.39 - 0CN

www.manitowoc.com